

DAIRY COMP USERS NEWSLETTER

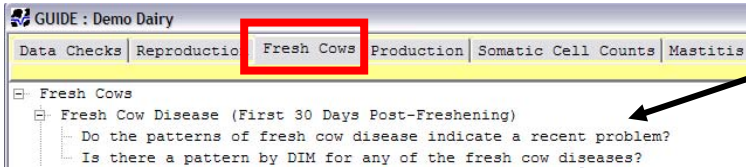
A PUBLICATION OF MINNESOTA DHIA

Summer 2011

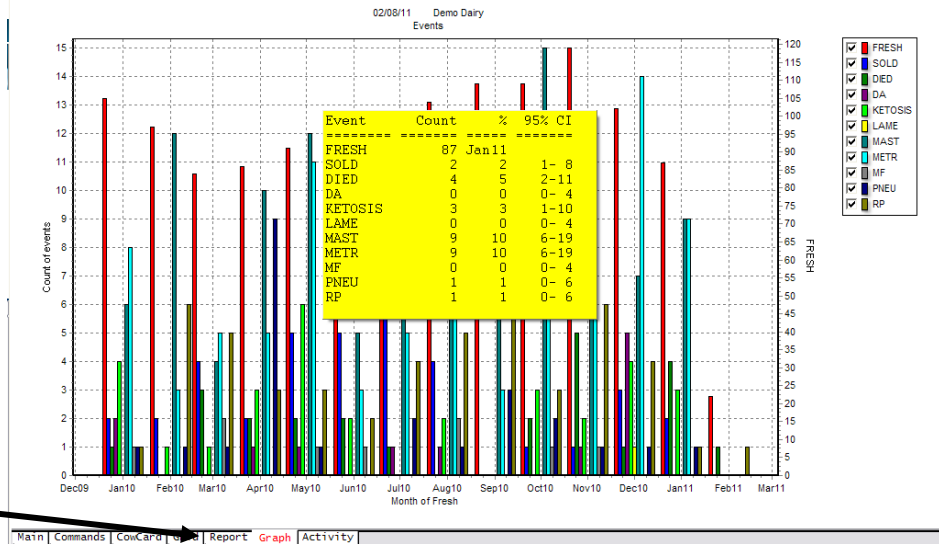
GUIDE – suggested report and USER Tab

When you type **GUIDE** in the command line, you have opened up an opportunity for analysis in all areas of management from production, fresh cow analysis, milk quality and reproduction. One area you may want to look at is your fresh cow transition period.

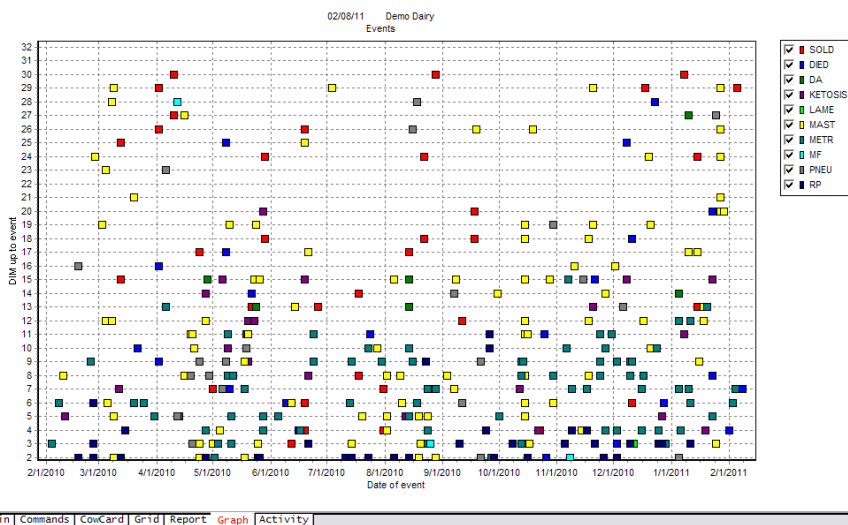
On the Fresh Cows Tab, double click on “Do patterns of fresh cow disease indicate a recent problem”.



Each health event that you have recorded is listed in the legend to the right and color coded. Compare the most recent month to those in the past. Are there trends for any diseases? If you want to look at the numbers for each month, simply hold your cursor over one of the bars within that month and a yellow box will appear with the number of cows for each event. You can uncheck some events to make it easier to see others. The report tab at the bottom will give you a full report of the count of events for all months.

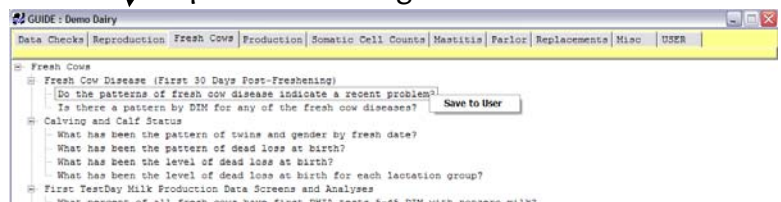


If you want to look at specifically when your fresh cow diseases are happening, double click on “Is there a pattern by DIM for any of the fresh cow diseases?” This graph will show trends for the first 30 Days in Milk.



If you have favorite reports that you want to look at on a regular basis, right click on them and select “Save to User” to put a copy under the USER tab. You can left click and drag reports in the USER tab to move them. Or right click on them for options to arrange them.

You can add your own USER reports by right clicking and choosing “Add a new Node”. Then right click on it to “Edit this Node” and put in the desired title. When you press Enter to save the title it will open up a box for you to type in



DAIRY COMP USERS NEWSLETTER

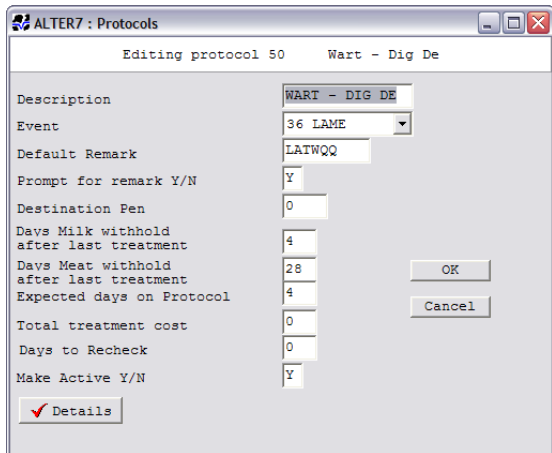
A PUBLICATION OF MINNESOTA DHIA

Summer 2011

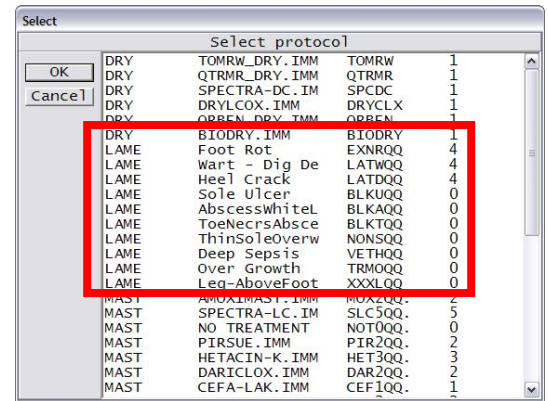
the Command. To edit an existing command use Edit this Node, make a change in the name, and press Enter.

NEW Protocols for LAMENESS

10 new protocols for Lameness have been added to Dairy Comp. You may need to do a web update to make them available. Each protocol is specific to a lameness issue such as Foot Rot, Wart, Sole, Ulcer, Abscess White Line, etc. To add any one of these protocols to begin tracking, at the command line, type Alter then choose number 7 Protocols. Click on the Add button and scroll



to the LAME protocol you want to add. Each protocol has options to allow you to set a standard remark, a new pen number, and milk and beef withhold days. When you enter a LAME Event, you will be prompted to choose a protocol to assign her to. Once you begin assigning cows to your LAME protocol they will appear on your Hospital Treatment lists to help you track treatments and progress of the issue. If you are not using Protocols and the Hospital/Treatment lists, please contact support at 1.800.827.3442 ext 1 for more information or to set them up.



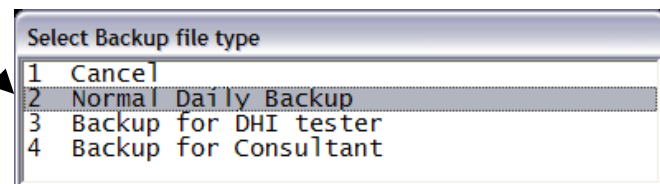
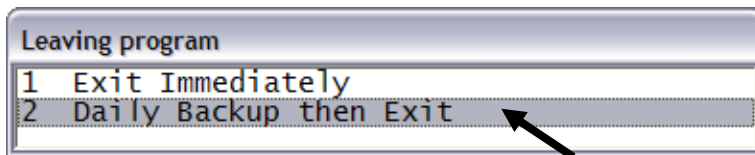
Windows 7 computers

Dairy Comp is compatible with 32 and 64 bit Windows 7 operating systems. If you are going to upgrade your computer, feel free to call and chat with one of our support staff at as to what is needed to reinstall your program on a new computer.

Are you regularly backing up?

Essentially every time you enter data into Dairy Comp, you should make a backup to your flash drive when you are done. Having a full Daily Backup makes it much easier to get you up and running again if you need to reinstall on a new computer or if the data on your computer ever gets corrupted.

Before you close your program, be sure to do the "Daily Backup then Exit". When you click on the Daily backup, you will see another window. Click on the Normal Daily Backup. This saves all the necessary files needed to reinstall your program on a new computer. The Backup for DHI Tester was designed specifically for the DHIA Tester and doesn't have all the setup files.



Dairy Comp Handy Hints

- Convert to lloop if you have gotten Internet. Download testday data in seconds not minutes!
- Tip: When the Command line is white, pushing your F3 key brings up a list of your reports. Click or press Enter on one to put the name on the command line, then press Enter to run it.