

# Minnesota DHIA News

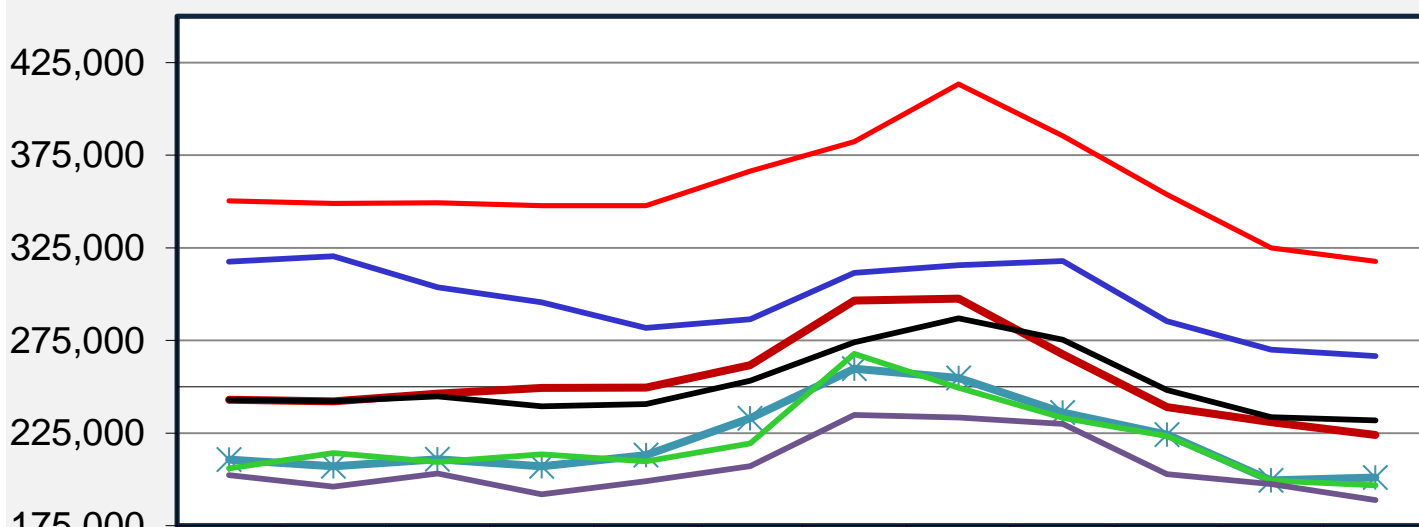
A PUBLICATION OF MINNESOTA DHIA

Volume 21 Issue 1

JANUARY 2021

In 2020, you improved the SCC average every month compared to 2019. You also set a new record low for each month of the year. Well done, congratulations on your smart work!

## DHIA SCC Trends



	Jan	Feb	Mar	Apr	May	Jun	Jul	Aug	Sep	Oct	Nov	Dec
2006	350,416	348,983	349,252	347,806	347,803	366,391	382,294	413,445	385,529	353,870	324,949	317,766
2009	317,546	320,515	303,681	295,667	281,821	286,423	311,576	315,650	317,904	285,379	270,019	266,535
2012	243,041	242,154	246,198	249,328	249,513	261,612	296,627	297,570	267,473	239,028	230,928	224,053
2015	242,811	242,136	244,768	239,415	240,612	253,253	274,000	286,978	275,340	248,163	233,613	231,841
2018	210,708	207,071	210,893	207,068	213,093	232,940	259,778	254,756	236,011	224,062	199,352	201,017
2019	205,861	214,159	209,425	213,458	209,740	219,467	267,730	249,445	233,196	223,402	199,421	196,772
2020	202,316	196,098	203,082	191,975	198,929	207,086	234,697	233,327	229,954	202,812	197,394	188,852

### Reasons to provide your email address to your Field Technician (if you haven't already):

1. You can access your information (reports) from 2 to 5 days faster than waiting for the mail. You can still get your paper reports in the mail.
2. If you have software you will get an email that lets you know your DNL data is ready for you to retrieve.
3. We won't share your email address with anyone, just like we don't share your mailing address.

### Annual Summary Update

For the calendar year 2020, due to the disruptions caused in many herds by the corona-virus, herds with 10 tests in the calendar year will be published, unless you have selected the no publicity option. This applies equally to electronic meter, robot, and traditional tests. To see your choice, see the bottom of your herd summary

## **Winter Reminders from Jeremy Schefers DVM, PhD**

As the ground freezes we hope that your crops are harvested and the fields are ready for winter. Yet, there is no rest for the weary and the seasonal work on a dairy farm is not done. Important livestock-specific tasks typically done in fall or winter include:

1. Calves: Add calf jackets, increase milk, and/or add supplemental fat to the milk of young calves in hutches and cold housing. Caloric and energy demand increases as temperature falls. If the ground is frozen, calves should have calf jackets and be fed more calories. Generally speaking, for every degree the temperature is below 55 F, a calf needs about 1% more milk/feed.
2. Deworming: Fall is an ideal time to deworm cattle and treat for both external (mange mites) and internal (stomach, intestinal) parasites. Pour-on dewormers, such as Cydectin and Eprinex, are approved for lactating cattle and are good for external and internal parasites. Please make sure to give the appropriate dose. Large Holsteins cows can weigh over 1,800 lbs. and a full pull of the treatment gun (approximately 1400 lbs) will only provide 80% of the therapeutic dose for large cows. Under-dosing will not clear the parasite burden and under-dosing is a waste of time and product. For large cows, the treatment gun can be set at 800 or 900 lbs. and pulled twice to achieve a ‘killing’ dose. A simple way to determine the weight of your cows is to record what cull cows weigh and compare those to herd-mates.
3. Proactively prevent pneumonia: If your cattle have had problems with pneumonia, consult your veterinarian and livestock professions to troubleshoot potential causes and re-examine winter ventilation. Fall is also good time to discuss treatment and vaccination protocols. Keeping calves clean and dry with ample amounts of dry bedding will reduce the severity of pneumonia.
4. If this is all done, there’s always manure to haul, calves to dehorn and castrate, cattle to move, equipment to “winterize,” and Christmas decorations to put up.

### **Identification (Eartag) Update**

During November, Minnesota DHIA surpassed 700,000 management and RFID tags sold all time. We offer All Flex, Destron Fearing, Y-Tex and DataMars official RFID tags as well as management tags from those companies and Z Tag. Call Heidi at 763.231.6768 with questions or to place an order. One of the features of tags you purchase from DHIA is that we load those numbers into your on-farm software and your Field Technician computer so no one has to key a 15 digit number!

You may obtain free official RFID tags from Minnesota Board of Animal Health at [www.bah.state.mn.us](http://www.bah.state.mn.us) or by calling 800-627-3529. The Board of Animal Health and USDA report that the Allflex & DataMars tags are typically shipping in 2-3 weeks, and Y-Tex are taking a little longer



# 25 Reasons to say YES



- 1 Used by herds ranging in size from 13 to 13,000 cows
- 2 Retains all data recorded during each animal's lifetime
- 3 Comprehensive default reports and unlimited custom reports featuring over 1,000 database items and the ability to use extensive filters, logic and grouping. Custom reports can be sent to PocketDairy for viewing
- 4 Edit system ensures proper information is recorded on the correct animal
- 5 No charge for unlimited technical support from experts with dairy background and an average of 15 years of experience with dairy herd management, PCDART, PocketDairy and DHIA
- 6 Herd management analysis with drill down capabilities available through Activity Tracker, Conception Tracker, Maternity Tracker, Heifer Tracker and Inventory Tracker
- 7 Easy data exchange with veterinarians, nutritionists, heifer growers and DHI staff
- 8 Affordable monthly fee with no large up-front purchase
- 9 Access to Money Corrected Milk to compare profitability of individual cows when making breeding and culling decisions
- 10 Powerful Timed AI management system
- 11 Flexible and extensive protocol and chore management system
- 12 Access to award-winning companion mobile programs PocketDairy and Vet Check Maxx which allow cowside input and sync back to PCDART. RFID features make quick work of group checks and vet check day.
- 13 Can exchange data with over 25 milking machine, robotic and heat monitoring systems
- 14 Optional low cost cloud backups available that can be shared with consultants
- 15 Import mating files and breed classification data
- 16 Scatter and line graphs for cow and herd data
- 17 Close-up group module to ensure proper movement and analysis of transition cows
- 18 Hoof care events can be recorded as health events and hoof care history can be viewed in a standard report
- 19 Flexibly import non-standard files and data through powerful edit system
- 20 Easily import genomic test result data and create custom reports to utilize the data
- 21 Simple Windows-based point and click
- 22 Robust embryo transfer capabilities to effectively track donor dams, recips and implantation date
- 23 Network capability with multiple computers
- 24 Customizable user-defined fields and graphs
- 25 Available in English and Spanish

PC Dart on-farm software has been around for 30 years and is used in daily management in 2,850 herds around the United States. Over 60 Minnesota DHIA members use PC Dart and we have been providing licensing and support for over a decade. The price has changed very little over that time. PC Dart was developed by DRMS, which in turn is owned by DHIA.

You will be pleasantly surprised by the pricing and the features of PC Dart. Users can view dozens of 2-5 minute videos on the website which cover a host of topics. Three longer videos for new users are also there for your viewing pleasure. You can also enjoy the optional "Tip Tuesday" which is a quick email tip that may make PC Dart use more valuable or even easier.

Of course unlimited live support is provided by Minnesota DHIA, backed up by the support staff of DRMS located at Iowa State University in Ames.

Please call Patty at 763.233.7856 for more information or to set up an installation of PC Dart. Watch the Dairy Star for testimonials from our members who use PC Dart. If you are switching from current on-farm software, it is convenient to make the switch to PC Dart at the time of your next DHIA sample day so you do not need to re-enter any events. Right now installs are free and the line for getting converted is still short. Twelve herds switched to PC Dart in December.

## December Milk Quality Leaders, ranked by SCC then Log SCC

Name	SCC	# Cows	Name	SCC	# Cows
*ERIC SEIFERT	31	8	*MATT ANDRING	71	123
HOEFS' DAIRY	36	292	RADERMACHER DAIRY LLC	72	219
*JEREMY BEYER	37	40	*FRANCIS & THERESA RYNDA	72	47
HAPPKE HOLSTEIN FARM	39	108	WHITE-AKER PASTURES	72	10
*BILL & ALAN MILLER	41	271	KARA-KESH HOLSTEINS	73	6
*MIKE & KAREN SCHILLER	41	98	*JERRY & SUE BINIEK	73	95
*LONNY MOEHNIG	42	79	METOGGA LAKE DAIRY LLC	73	449
JOHNSON DAIRY	42	105	*KYLE MOSER	73	41
RKB DAIRY	43	140	DANINGER INC	73	81
GEHL ACRES FARM	45	140	*ALICIA THURK-HIEBERT	74	40
*MAREN & JEREMY HOLST	45	131	HEMMESCH DAIRY INC.	74	126
BILL & NORMA ROUSAR	47	52	*JEREMIAH SMITH	74	49
RUSSELL J WIRT + FAMILY	49	534	ZUMBRO VIEW FARMS LLC	75	78
SHIR-MAN HOLSTEIN FARM	50	62	*CHARLES & MARY SCHORNACK	76	47
RIVER VALLEY DAIRY LLC	51	109	BEAVER OAK DAIRY	77	142
BIRCH POINT FARMS PESHON	51	308	TURNER DAIRY LLC	77	169
HOFFMAN NORTH-CREEK	52	490	YOUNGS DAIRY	77	116
BREEZY WILLOWS FARM	52	38	*JOHN WOLF & SONS	77	101
*DENNIS AND WAYNE WOLTERS	53	151	BITZAN BOVINES	77	65
*DEVOINE KRUSE	54	230	*VAUGHN AND JOAN EUERLE	78	83
MEADOW FRONT FARMS	54	128	STADICK FARM INC	78	199
CRONK DAIRY	55	36	*CALVIN AND TAMMY BEUMER	78	86
MERDAN DAIRY INC	56	76	CLEAR CREST FARM,LLC	79	792
WOLF CREEK DAIRY	57	457	*RYAN KNISLEY	79	62
*STEVE MARTIN	57	49	WALTER BROS FARM	79	431
*MIKE AND DONNA TELLERS	57	55	*STACI SEXTON	79	64
WOLD DAIRY	57	49	DUX WILLIE	79	32
MUNDT DAIRY	58	215	VALLEY ACRES DAIRY	80	899
*JIM EVANS	59	113	SCHEFERS BROTHERS	80	77
CALVARY HOLSTEINS	59	120	*RON & PATTY STROBEL	80	46
MILLER DAIRY	60	57	*STACY & JULIE MILLER	80	92
IRISH RIDGE DAIRY LLC	61	82	BURKE DAIRY INC	81	185
ROGER AND SANDY ERICKSON	61	43	*MIKE MENZE	81	87
*MARK KLEHR	62	57	*PETER+DAVID BURFEIND	81	341
*BRUCE & JODI HEIM	62	388	JASSEL HOLSTEINS	81	92
*LLOYD AND JULIE BLOMMEL	62	151	GLEN & BECKY CHRISTEN	81	41
*ADAM & SARAH MELLGREN	62	70	FAITH ACRES DAIRY INC	82	137
KUECHLE DAIRY	63	252	*MARVIN RADEMACHER	82	53
SASS FARMS	63	259	KRAIG&RACHELLE KRIENKE	83	575
SUNNY SIDE DAIRY	63	132	TRAIL SIDE HOLSTEINS	83	663
*JAMES & BETH OLSON	63	47	MILLER FARMS	83	106
*ROGER ALDINGER	65	104	*DOUG PELKA	83	57
STEVE & RUTH BUTZLER	65	122	*DUANE&KAREN TIMM	84	113
HARMONY HILLS DAIRY	65	63	ZAHBULLS HOLSTEINS LLC	84	385
MARSHLAND FARMS	65	109	*SCOTT GATHJE	84	71
*BRUCE AND RUSS NELSON	67	94	KELLER DAIRY	84	120
*DARYL+LISA MAUS	67	69	STELTER HOLSTEIN DAIRY	85	292
*ANDREW INGVALSON	68	194	*GARY SCHLAUDERAFF	86	645
*TREVOR DICKE	68	101	*JEREMY AND EMILY SMITH	86	36
RYBERG REG HOLSTEIN	71	38			