

SCOUT USERS NEWSLETTER

A PUBLICATION OF MINNESOTA DHIA

Winter 2011

Stop Keying Your Johnes Results!!

If you are using the Milk ELISA Johnes test, your results can be automatically imported into Scout when you receive your regular testday results with the updated program. Results from previous tests will not import unless your program was already updated. All test days after your Scout program is updated will import the new Johnes results. Before the update, you had only the items JDATE and JREM. The update adds JRSLT and JOD and imports the JDATE, JRSLT, and JOD automatically. JDATE is the last date that she was tested. JOD is the numeric value for the Johnes Optical Density. Greater than 100 indicates a positive Johnes cow. JRSLT is the result of the test, P for Positive and N for Negative. Nothing will import into the JREM item. It has 5 spaces available for you to enter your own remarks about the testing. These items can

Events	Items1	Items2	TestDays	PrevLacts	Lactation	Picture	
BNAME	346	DNAME	19	FRSH	1/ 8/10	VDAT	-
TAG	+000385621	DAMID	470	RPRO	BRED	VEVC	0
NOTE	41VM33725	DMTAG	41VLV2278	BRDHT	11/20/10	VXDAT	2/28/10
REG	-	SIRE	200H4779	CSEX	F	VXREM	1
VISID	10	SREG	130588960	DOPN	361	NMLV	1
LACT	1			DIMLB	316	NJ5	0
BIRTH	1/12/08	SIRC	-	TBRD	7	NSVX	0
AGE	2-11	LSIR	7H10685			BANG	0
CNTL	0	SIR1	-				
STRG	0	SIR2	-				
PSTRG	0	ETDAM	0				
TWIN	-	MUN	16				
CLASS	0						
EASE	1	DCC	0				
CALF1	572	CDAT	-	DRYOF	-	AGEFB	2-1
CALF2	0	DUE	-	DRYDT	-	AGEFR	1-11

be added to the cowcard by right clicking on blank space or an item you don't particularly use, click Add/Change Item on Page. Choose one of the Johnes Items and press enter. You may also want to add these items onto the Johnes Test List in the Misc menu.

To add Items to the report:

1. Go to the File menu, then click on Alter.
2. Choose 3 Report Changer, select JLIST and press enter.
3. Click on the ADD button in the lower left corner and add the desired items that are not already on the report.
4. Click on Done and Yes to save report.
5. You might also want to add them to the COWSDUE and DUE DRY Reports.

Misc	Help
Calving Ease Rpt	
User Def Rpt : Cows	
User Def Rpt : Hfirs	
User Def Rpt : Bulls	
Male Inventory	
Enter Sire Matings	
Calving Report	
Herd Inventory	
Monthly Events	
Dead Cow Summary	
Dead Heifer Summary	
Feed Report	
Holstein EASY interf	
Johnes Test List	
Foot Trim List	

Import Sires Matings

Another new feature with the Scout update is the ability to import sire matings from a file instead of manually entering them. The menu option under the Misc menu has been changed from Enter SIR1 SIR2 to Enter Sire Matings. The option to manually enter them is still available if you choose. To Import sire matings from a file, you must first receive a file from your AI company. Once you have the file:

1. Go to the Misc menu and choose Enter Sire Matings
2. Next, select #3 Import matings from file.
3. Browse to the location of your file and click Open.
4. Choose whether the cows in the file are listed by ID or BNAME, then press enter.
5. The matings should be imported at this point. To view them you can add SIR1 or SIR2 to the cowcard or on any report.

To manually enter your matings:

1. Go to the Misc menu and choose Enter Sire Matings.
2. Next, select #2 Manually enter.
3. Choose the cow and enter SIR1 and SIR2.

Sire Mating Options
1 Exit
2 Manually enter
3 Import matings from file

Pocket Cow Card-Write now Available for Scout

Pocket Cow Card (PCC) is a handheld software program that allows you to take Scout with you where ever you go. In Scout, it is available in two different versions. The first version, PCC-Read, allows you to send your Scout cow data to the PCC program, where the hand held unit can be used for look up purposes only. There is no data entry allowed, but the cowcard data and reports can be viewed. The second version is the PCC-Write, which allows you to do everything that the PCC-Read version does but you can also enter data into the hand held unit and then upload that data to the computer version of Scout. Lastly, there is a PCC-Scan version that takes what is available in the PCC-Write version but adds the ability to use a RFID scanner and identify cows based on their RFID tag, so that the manual look up is no longer needed. PCC-Scan is only available with Dairy Comp 305.

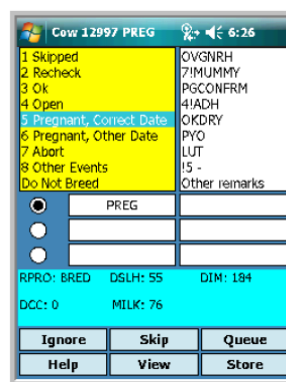
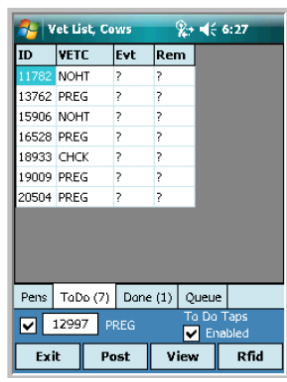
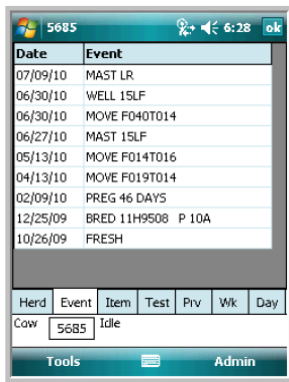
Below are 3 screens from PCC - Write. The first is a snapshot of the Events tab on the cow card. Each tab on the cowcard

SCOUT USERS NEWSLETTER

A PUBLICATION OF MINNESOTA DHIA

Winter 2011

in Scout is available in PCC-Write for looking up any information on the cow. The other two screens are the Vet List and Entering Vet Results. One of the most used parts of the PCC program is the ability to do herd check on the hand held unit at cow side. With the PCC program, you have access to enter the herd check data as the cow is checked by the vet and you have access to all her events, testdays and other misc. item data while you are examining the cow. The ability to access that data and to then enter the resulting prognosis results in labor savings, time savings and reliability of the data being entered. If you are interested in learning more about Pocket Cow Card and its features, please call 1.800.827.3442 and press 1 to talk to anyone in support.

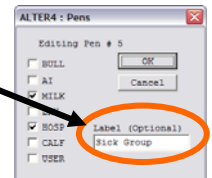


PLEASE NOTE
Your Scout software is not tax exempt. According to the state of MN, the software is taxable. It would only be non-taxable if The software was used to control or operate qualifying farm machinery.

Features of Converting to Version 5

Initially the Scout program was created in Version 3, however, over the years parts of Scout have been expanded which are available in Version 5. Version 5 has existed for a while, but your Scout program wasn't automatically converted with an update. You may have it converted if you have worked with someone in support in the past but if you haven't, here are a few features Version 5 contains:

1. Pen labels – allows you to assign a name to your Pen numbers which gives others more information about a group of cows when looking at data. Go to File → Alter → Pen Definitions. Add a new pen or double click on one of your pens to change a pen.
2. 15 digit AIN numbers – Allows you to use 15 digit AIN/RFID numbers in Scout.
3. Increase Archive file size – allows an increase to 32000 records. The original archive file size was 1300. The benefit of version 5 is that when you increase your archive file size most Scout herds would only have 1 archive file to manage instead of multiple very small archive files.



To convert to version 5:

1. Bring up a cowcard.
2. On the command line in the upper right corner, type: **CONVERT\V5**, then press enter. Click on Yes when asked if you are sure. Your cowfile will then be converted.
3. If you receive a message that states "This cowfile is already Version 5", your cowfile was previously converted and you already have access to the features listed above.

Enter Data Fast with the Ditto Key

If you want a shortcut to enter the exact same event information for quite a few cows at a time, try using the Ditto Key. To use the ditto key, you need to enter the first animal as that group is to appear. For example, if you dried off 4 cows on 12/1/2010, you would select Dry from the menu, enter the first cow, the date, and the remark, and press enter to record. Go to the next cow, BUT **Press the * key instead of Enter to choose her**. That cow's information will enter so fast you'll barely see it. To make sure it was entered, you can see on the upper right hand corner of your screen that the cow was entered the same as the previous cow with the same event date and remark. Depending on how many cows have identical data for you to enter, this may work well for Vaccinations, Dry offs, Breedings or Foottrim events. For data changes, such as the Service Sire when recording breedings, use Enter for the first different animal and then use * for all those bred with that date and Bull.

310	12/01/10	DRY	TOMORROW
348	12/01/10	DRY	TOMORROW